



Superstructure

Clark Joint Venture Awarded Naval Hospital Replacement Project at Camp Pendleton

SAN DIEGO – Naval Facilities Engineering Command (NAVFAC) Southwest awarded **Clark/McCarthy** a \$394 million contract to design and construct a new hospital at Marine Corps Base Camp Pendleton. With modifications and an option, the value of the contract will increase to \$451 million.

The new 500,000 square-foot, multi-level medical hospital is located on a 70-acre site at Camp Pendleton in Southern California. The completed project will include in-patient medical facilities with 54 patient rooms and up to 60 patient beds, emergency care, primary care, specialty care clinics, surgery, intensive care, and support spaces.

The primary project goal is to create an appropriately-sized facility that will accommodate efficient staff and patient operations in order to provide modern, safe, and effective medical care for the region's military population and their beneficiaries.

Additional work includes adding a central utilities plant, a 1,500-space, multi-level parking structure, surface parking, and site development. The new hospital will be designed and constructed in line with California's seismic safety standards and to receive LEED® Gold certification.

The contract also includes a planned modification for Clark/McCarthy to furnish and install furniture, fixtures, and equipment



Naval Hospital Replacement Camp Pendleton, Marine Corps Base Camp Pendleton, Calif. (rendering courtesy of HKS Architects, Inc.)

necessary to support the facility's function and will enhance the overall coordination and turnover of the hospital.

HDR, Inc., of San Diego, is the master architect and has developed a design that is focused on providing the highest level of patient care for the military. The hospital will be located just inside the main gate at Camp Pendleton, near Interstate 5 and overlooking the Pacific Ocean. The project design is reflective of the surrounding environment.

The Naval Hospital Replacement Project at Camp Pendleton is one of the largest American Recovery and Reinvestment Act (ARRA) of 2009 projects within the Department of Defense and is the largest ARRA project awarded in the Department of Navy. Clark/McCarthy has over 65 percent small businesses participation on the project with a focus on providing opportunities for local and veteran businesses.

Design and construction will begin in

late 2010 and the project is scheduled for completion in 2014.

HKS Architects, Inc., Los Angeles, is the project architect. Additional project partners include KPFF Consulting Engineers, San Diego, structural engineer; TMAD Taylor and Gaines, San Diego, mechanical engineer; X-nth, San Diego, electrical engineer; Flores Lund Consultants, San Diego, civil engineer; and The EcoLogic Studio, San Diego, sustainability consultant.

Clark to Build Consolidated FDA Facility in Maryland



FDA Consolidated Center for Biologics Evaluation & Research (CBER), White Oak, Md. (rendering courtesy of Kling Stubbins)

BETHESDA, Md. – The General Services Administration (GSA) has selected **Clark Construction Group, LLC**, to build the U.S. Food and Drug Administration's (FDA) Consolidated Center for Biologics Evaluation & Research (CBER) in White Oak, Md. Clark was awarded a \$202 million contract for two laboratory buildings totaling 533,890 square feet and a 334,000 square-foot supporting office building. Options could add to the scope of work, including constructing an additional supporting office building and an 878,000 square-foot garage. With these options, the full value of the contract could reach \$324 million.

The concrete laboratory buildings will have a glass-and-metal-panel exterior and the office buildings will be a

continued on p. 2

Catholic Healthcare West Taps Clark to Lead Seismic Retrofit Initiative

COSTA MESA, Calif. - **Clark Construction Group - California, LP**, has been awarded a design-build contract for the seismic retrofits of 18 buildings in nine locations for Catholic Healthcare West (CHW).

Clark's scope of work covers approximately 400,000 square feet of facilities at these CHW hospital campuses in California: California Hospital Medical Center in Los Angeles, Glendale Memorial Hospital in Glendale, Mercy Hospitals of Bakersfield in Bakersfield, Northridge Hospital Medical Center in Northridge, St. Bernardine Medical Center in San Bernardino, St. John's Pleasant Valley Hospital in Camarillo, St. Joseph's Medical Center in Stockton, St. Mary's Medical Center in San Francisco, and St. Mary Medical Center in Long Beach.

The scope of work for all of the facilities involves the seismic retrofit of acute care facilities to comply with California senate bills SB 1953 and SB 1661. Every hospital campus has special considerations and requires a unique approach. The design-build team is handling each facility individually to develop customized solutions.

The design and construction schedule varies by hospital campus. Preconstruction efforts will extend through 2012.

RBB Architects, Inc., of Los Angeles, is the architect. Additional project partners include Degenkolb Engineers, Los Angeles, structural engineer; N.A. Cohen Group, Inc., Sherman Oaks, Calif., electrical engineer; and M-E Engineers, Los Angeles, mechanical and plumbing engineer.



Nine Catholic Healthcare West facilities are slated for seismic retrofits.

20-Story Graduate Student Housing Project Goes Up in East Baltimore



Johns Hopkins Graduate Student Housing, Baltimore, Md. (Rendering courtesy of Marks, Thomas Architects)

BALTIMORE – In July, **Clark Construction Group, LLC**, with joint venture partner Banks Contracting Company, began construction on the 20-story Johns Hopkins Graduate Student Housing project on the 900 block of N. Wolfe St. in East Baltimore. Developer Educa-

tion Realty Trust awarded Clark/Banks a \$43.5 million contract earlier this year. The 276,000 square-foot building will have 321 apartment units with beds for 576 students from the nearby Johns Hopkins medical campus.

The building will be a post-ten-

sioned, cast-in-place structure on top of caissons with a skin that includes brick, metal panels, a stacked window wall, and punched windows. The first eight floors are each 18,000 square feet. Floors 12 through 20 are each 12,000 square feet and form a distinctive tower. Amenities will include a roof terrace, fitness room, lounge, and central lobby. Three retail spaces, totaling 8,000 square feet, will be built on the street level.

The project is designed to achieve LEED® Silver certification from the U.S. Green Building Council. Among the planned sustainable amenities is an extensive green roof on the ninth floor.

The Johns Hopkins Graduate Student Housing project is expected to be complete in June 2012.

East Baltimore Development Inc., is the project's owner and Otis Warren + Company is the co-developer. Marks, Thomas Architects, Baltimore, is the lead designer. Additional project partners include Harris-Kupfer Associates, Inc., Baltimore, architectural consultant; Hope Furrer Associates, Inc., Towson, Md., structural engineer; Burdette Koehler Murphy & Associates, Inc., Baltimore, mechanical and plumbing engineer; Paulco Engineering, Inc.,

Columbia, Md., electrical engineer; Phoenix Engineering, Baltimore, civil engineer; and GL Design, Lutherville, Md., interior designer.

Clark to Build Consolidated FDA Facility in Maryland *continued*

concrete structure with a brick facade. A large skylight creates a central atrium to connect the buildings. The scope of work also includes extensive landscaping of several courtyards on the premises.

The FDA CBER project will consolidate several local area facilities onto the FDA's campus in White Oak, Md. Clark completed the FDA's Center for Drug Evaluation and Research 2 project at the White Oak campus in 2008.

Work on the project has already begun and will follow a 40-month construction schedule.

Kling Stubbins, Washington, D.C., is the designer of the laboratory buildings, and RTKL Associates, Inc., Washington, D.C., is the designer of the two supporting office buildings and parking garage.

Atkinson Awarded Two Caltrans Contracts in Orange County

FOOTHILL RANCH, Calif. – The California Department of Transportation has awarded **Atkinson Contractors, LP**, two contracts, totaling more than \$168 million, to create a more seamless transition between I-405's high-occupancy vehicle (HOV) lanes and Route 22 and the I-605 freeway in Orange County. In both projects, Atkinson will widen the outside lanes along I-405, which

will allow for the construction of an additional HOV lane in both directions and provide direct access ramps to the adjoining freeways.

Under the \$66.7 million contract for the SR-22/I-405 West County Connector Project – Eastern Segment, Atkinson will provide two miles of highway improvements through Garden Grove, Westminster, and Seal Beach. The scope

of work includes the construction of three new highway overcrossings, two of which replace existing structures that will be demolished prior to the new construction. Atkinson will self perform 21,000 linear feet of drainage work, 45,000 cubic yards of concrete paving, pour 22,000 cubic yards of bridge concrete, and excavate 183,000 cubic yards of roadway.

lion SR-22/I405 West County Connector Project – Western Segment contract. Over a five-mile stretch through Long Beach, Los Alamitos, Seal Beach, and Rossmore, Atkinson will widen the existing I-405 and I-605 freeways, as well as perform a partial reconstruction of the Route 22 connector.

Additional work includes constructing six new overcrossings, four of which will replace existing structures. One of the new bridges, the I-405/I-605 HOV Bridge, will measure 2,902 feet long and will sit 45 feet above the travel way.

Construction began in September and completion is scheduled for February 2014. Parsons, Pasadena, Calif. is designing this portion of the project in conjunction with the Orange County Transportation Authority.

Atkinson will perform similar work under the \$102 mil-

lion SR-22/I-405 West County Connector - Eastern Segment, Orange County, Calif.

The Western Segment project will begin in January and is scheduled for completion in July 2014. TRC Companies, Inc., of Irvine, Calif., working in conjunction with the Orange County Transportation Authority, is designing this portion of the project.



SR-22/I-405 West County Connector - Eastern Segment, Orange County, Calif.

Two Clark Projects to Improve Metro System in Washington, D.C.

BETHESDA, MD. – **Clark Construction Group, LLC**, has been awarded two separate contracts that will improve portions of the Washington Metropolitan Area Transit Authority's (WMATA) Metro system.

WMATA awarded Clark Design/Build, a Clark Construction affiliate, a contract for the Cheverly Abutment and Aerial Structure Rehabilitation project. An abutment near the Cheverly Metro station has shifted laterally because of the movement of an adjacent slope. Clark Design/Build will lead the rehabilitation efforts to return the bridge and railroad to their original location and prevent any further movement.

After developing a design for the track realignment, the project team will implement the repairs. This will require modifying the existing structures and, during a series of scheduled weekend service outages, lifting the bridge back to its original alignment.

To protect the abutment from any future slope movements, the project team will design and install a ground improvement structure. These slope stabilization measures will use drilled caissons.

The scope of work also includes rehabilitating two additional bridge piers, restoring proper drainage to the site, realigning approximately 500 linear feet of the railroad tracks, and reworking the buried power, communication, and train control cabling between the two adjacent stations.

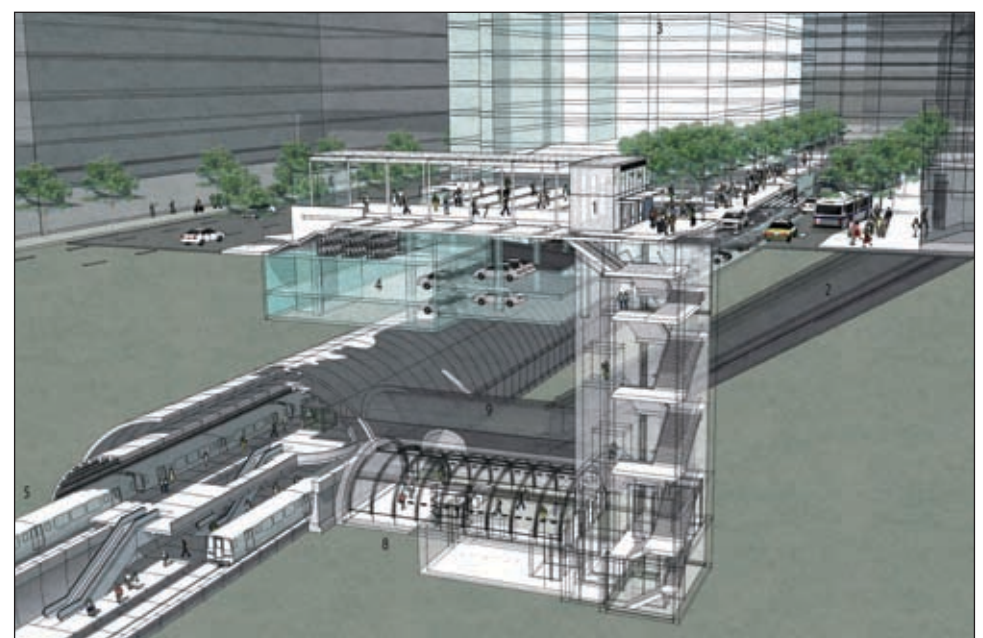
Design and field investigation work began in May. Major construction activities started this fall. The project is scheduled for completion in the spring of 2011.

Clark Construction also was awarded a \$32.6 million contract to help alleviate congestion and improve passenger traffic flow at one of WMATA's busiest stations. The Rosslyn Station Access Improvement Project (RSAIP) includes building a new below-grade entrance mezzanine, installing three high-speed elevators, and adding new kiosk and fare collection equipment at the Rosslyn Metro Station. To enhance passenger safety and improve station egress, the project team also will construct a new emergency evacuation stairwell. A transfer point between Metro's Orange and Blue Lines, Rosslyn is WMATA's busiest station in Virginia.

Arlington County will manage the design and construction of the RSAIP in coordination with WMATA and the JBG Companies, the developer of Rosslyn Central Place, a future project directly above the Rosslyn station.

Clark will self-perform support of excavation work and cast-in-place concrete work. Atkinson Construction's Underground Division will perform drill and blast mining for the shaft and mezzanine tunnel.

Construction began this fall. The project is scheduled for completion in the spring of 2013.



Top Right: Metro tracks near the Cheverly Metro station, Cheverly, Md.

Bottom Right: Rosslyn Station Access Improvements (Rendering courtesy of KGP Design Studio)

Mega Projects Reach Mega Milestones

BETHESDA, Md. - This summer, two of Clark's larger projects reached milestones few projects ever do. Both project teams celebrated the occasion by honoring the workforce and reaffirming their commitment to working safely.

NGA Campus East

At the **NGA Campus East** project at Fort Belvoir, Va., the Clark/Balfour Beatty joint venture team marked putting more than one billion dollars of work in place as well as surpassing six million man-hours worked. During a July event with the project's workers and U.S. Army Corps of Engineers (USACE) personnel, representatives from Clark and Balfour Beatty spoke and recognized the efforts of the individuals who have made the massive project successful so far.

Colonel David Anderson, Commander of the Baltimore District of the USACE, spoke candidly about the importance of NGA Campus East. "This is a new state-of-the-art facility that will help win the war on terrorism," he said. "This facility will enable a lot of different branches and organizations to collaborate under one roof."

Several components of NGA Campus East, including the central utility plant, technology center, visitor control center, and parking garage are complete. The one million square-foot south bar of the main office building is set to be occupied in January 2011. The main office building's north bar is scheduled to reach substantial completion in April 2011.

Johns Hopkins Hospital New Clinical Building

In June, the Clark/Banks, A Joint Venture project team reached five million manhours worked at the **Johns Hopkins Hospital New Clinical Building** project. A lunchtime celebration emphasized the project's impressive safety record. Not only are the project's recordable and lost-time rates well below national averages, but the team has been honored with 13 awards for safety by local and national groups. Last year, on July 25, the project marked one year – and more than two million manhours worked – without a lost-time incident.

Howard Reel, Senior Director of Facilities, Design, and Construction for Johns Hopkins Medicine complimented the project team's commitment to safety. "The Clark/Banks organization needs to be congratulated [for its safety program]," he said. Additional speakers included Ron DeJuliis, Maryland State Commissioner of Labor & Industry, and a representative from the Chesapeake Region Safety Council, who presented the project team with the 2010 Platinum Award of Excellence – Construction Industry.

When complete, the New Clinical Building will be the new main entrance and centerpiece of a \$1.2 billion Johns Hopkins redevelopment plan to increase research and clinical space and replace outdated hospital buildings

with advanced facilities.

This new facility will interconnect with the Harry and Jeanette Weinberg Building and the Nelson/Harvey Tower to form a state-of-the-art health care complex. The building will include 560 beds (355 adult and 205 pediatric); 33 operating rooms; 42 radiological suites; 13 non-invasive treatment areas; 16 gastrointestinal and pulmonary diagnostic and treatment areas; and 96 emergency treatment areas (67 adult and 29 pediatric).

Quality, Sustainability Highlight Completed 90 K Street

WASHINGTON, D.C. – **Clark Construction Group, LLC**, has completed work at 90 K Street NE, building a 12-story Class-A office building for developer and owner Trammell Crow Company that delivers quality and sustainability. 90 K Street is the first of four buildings planned for Trammell Crow Company's Sentinel Square development, which fronts K, L, and 1st Streets in the city's NoMa (North

of Massachusetts Avenue) neighborhood.

Designed by SmithGroup, Inc. of Washington, D.C., the exterior of the 412,000 square-foot building consists of individually-glazed units, curtain wall, precast concrete, stainless steel metal panels, and black granite. Inside, a two-story lobby is finished with Jerusalem Gold marble, louvered millwork panels,

continued on p. 5

ANG Readiness Center Dedicated at Joint Base Andrews

CAMP SPRINGS, Md. – The Air National Guard's (ANG) Readiness Center was dedicated at Joint Base Andrews on September 16. **Clark Construction Group, LLC**, built the \$62 million, 170,000 square-foot building, which was named Sheppard Hall during the ribbon-cutting ceremony in honor of retired Air Force Maj. Gen. Donald W. Sheppard, a former director of the ANG.

The four-story, glass-and-metal-clad, anti-terrorism/force protection-compliant building was designed with flexible workspaces to accommodate the diverse needs of 600 military and civilian employees. Dismountable systems furniture allows occupants to easily reconfigure their office space to meet mission requirements. The Readiness Center also stands as a model of sustainability. Expected to achieve LEED® Gold certification, the building features raised access flooring for improved air flow, automatic light shades, and a green roof. Clark completed the project ahead of the ANG's need date.

This project consolidates the ANG's main directorate offices, which were previously split between Joint Base Andrews and Crystal City, Va. The new building connects to the ANG's existing facility by a two-story glass walkway. Beneath the walkway is a shared, open courtyard with landscaped memorial plaza.

The ANG Readiness Center is the first project in the state of Maryland completed under the 2005 Base Realignment and Closure (BRAC) Act.

In addition to the dedication and ribbon cutting, the event included a lunch for ANG employees and guests, a cake prepared by Baltimore's Charm City Cakes, and a performance by country singer Laura Bryna, whose song, "Hometown Heroes" is featured in ANG commercials and marketing materials.

Project team partners include CH2M Hill, of Chantilly, Va., design manager; AECOM, of Arlington, Va., base architect; Gensler of Washington, D.C., interiors architect; and Land Planning and Design Associates, of Charlottesville, Va., landscape designer.

Top Right: Ben Lawless, Chief of Operations Division, ANG/CEC, and Clark Senior Vice President James L. Herndon, addressed the crowd during the ANG Readiness Center's ribbon-cutting ceremony.

Center Right: Country singer Laura Bryna performed for attendees during the festivities.

Bottom Right: A cake modeled after the new ANG Readiness Center was served following the ribbon-cutting festivities.



Clark Completes First Phase of Waterfront Station in Southwest D.C.



WASHINGTON, D.C. – **Clark Construction Group, LLC**, has completed the first phase of the Waterfront Station project in southwest Washington, D.C. The \$140 million project, which includes twin eight-story office buildings, each with two levels of below-grade parking, and street-level retail, is the new home of several departments of the Washington, D.C. government, including the Department of Consumer and Regulatory Affairs and the Office of the Chief Financial Officer.

The exterior of the two buildings, 1100 and 1101 4th Street, SW, features multiple skin types that help break up the façade. Exposed concrete, stone, embedded light boxes, three types of

metal panels, and more than a dozen colors of terra cotta create a neighborhood feel on the street level. A glass curtain wall system with specialty glazing and sunscreens on both buildings' upper levels allows natural light to spread throughout interior areas. Each building's lobby features a floating white concrete staircase and terrazzo floors, benches, and security desks.

In the first phase of the project, Clark demolished the existing Waterside Mall. Built during the 1960s, Waterside Mall spanned four city blocks and blocked 4th Street, SW, between M and I Streets, SW. During demolition, Clark maintained pedestrian access to the nearby Waterfront-SEU Metro sta-

tion. Once Waterside Mall was razed, construction of the two office buildings began and crews could re-connect 4th Street, SW. In conjunction with the new roadway, Clark rebuilt Waterfront Station's Metro plaza to include water features and colored concrete.

The completed Waterfront Station brings a new vibrancy to its southwest Washington, D.C. neighborhood. Street-level tenants, including Safeway, CVS, several eateries, and others, will provide amenities to tenants and the community. The project team also took great care to lessen Waterfront Station's environmental impact. Designed and built to earn LEED® Silver certification, the buildings feature multiple green roofs and build-

*Pictured above:
Waterfront Station, Washington, D.C.
(Photo by Mostafa Fahimi)*

ing materials that are regional, recycled, and low-emitting. The site's irrigation system relies on collected condensation.

Clark reached substantial completion in late January and tenants have been moving in since then. Clark Interiors was responsible for the project's tenant fit-out work.

The project's developer is Waterfront Associates, LLC, a joint venture of Forest City Washington, Vornado/Charles E. Smith, and Bresler and Reiner.

Shalom Baranes Associates, LC, of Washington, D.C., is the project architect.

Quality, Sustainability Highlight Completed 90 K Street *continued*

and metal panel column covers. 90 K Street also has three below-grade levels with 317 parking spaces. A shared courtyard and landscaping, including granite tree planters, flower beds, decorative metal railings, and an irrigation system, will unify this building with the three additional buildings to be developed at

Sentinel Square.

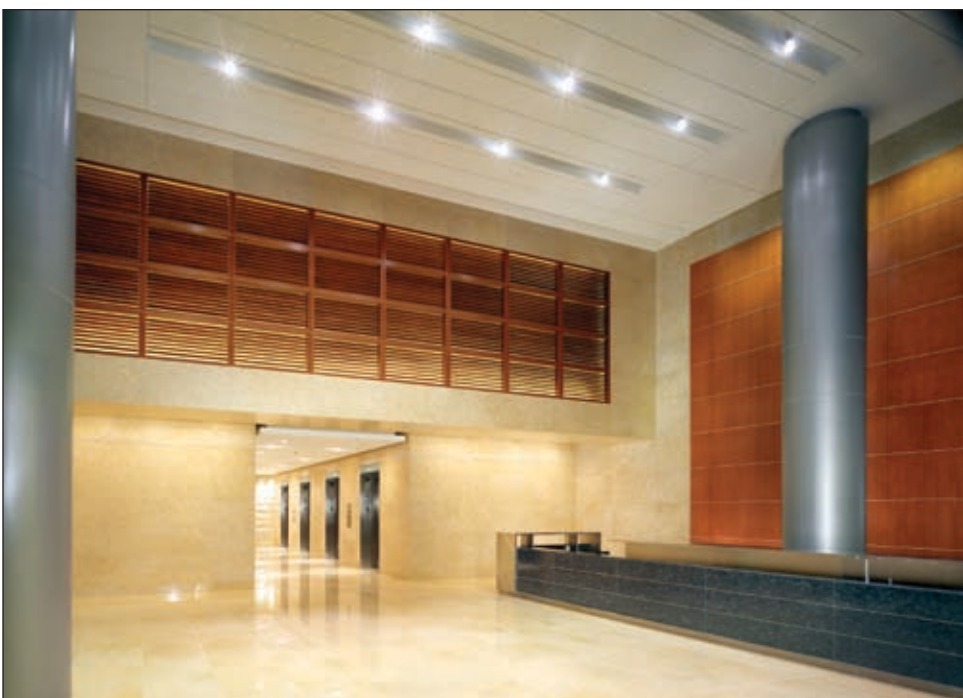
90 K Street anticipates earning LEED® Gold certification from the U.S. Green Building Council. Among the project's many sustainable elements are low-emitting materials, low-flow water fixtures, roof pavers with a high Solar Reflective Index, and a high-performance curtain

wall system. A water cistern in the parking garage collects the building's greywater for irrigating the landscaping.

Project partners include Haynes Whaley Associates, Inc., Reston, Va., structural engineer; B&A Consulting Engineers, Decatur, Ga., MEP consultants; Weidlinger Associates® Inc., Washing-

ton, D.C., skin consultants; Wiles Mensch Corporation, Reston, Va., civil engineer; and O'Doherty Group Landscape Architecture, Annapolis, Md., landscape consultants.

*Pictured below: 90 K Street, Washington, D.C.
(Photos by Hoachlander Davis Photography)*



Expanded, Renovated Arena Stage Opens in Washington, D.C.



The expanded Arena Stage features an open public area for theatergoers to gather before and after performances. (Photo by: Nick LeHoux)

WASHINGTON, D.C. – **Clark Construction Group, LLC**, reached substantial completion on the expanded and renovated Arena Stage in southwest Washington, D.C., earlier this summer. The accomplishment marks the end of more than two years of construction to transform the 50-year-old District landmark into Arena Stage at the Mead Center for American Theater, a vibrant theater campus. Clark completed the \$107 million project (hard construction

cost), including more than 200,000 square-feet of work, in 29 months.

Before the expansion and renovation project broke ground in January 2008, Arena Stage consisted of two free-standing theaters: the Kreeger and the Fichandler Stage. Clark built an additional theater – the 200-seat Arlene and Robert Kogod Cradle Theater – and enclosed all three spaces in a transparent glass curtain wall. Both existing theaters were fully renovated.

The Kreeger's seats were restored, existing finishes were refurbished, and new rigging and control booths were built; the theater's formerly-exposed roof was transformed to an open public area, overlooking the main level. The Fichandler's renovations include a refinished stage, new catwalk, and carefully-restored plaster, concrete, and woodwork.

The expansion creates new spaces for theatergoers and in-house amenities

for Arena Stage's staff and performers. Patrons enter through a new entrance and ascend a grand, concrete stairwell to reach central gathering spaces, bars, and a terrace. The new Arena Stage also features expanded rehearsal spaces, dressing rooms, set construction areas, and office and administrative space. Above the new facility, the roof's cantilevered tip points toward the Washington Monument, symbolically linking Arena Stage and the National Mall.

The visually stunning new Arena Stage presented myriad engineering and construction challenges. Typical concrete projects of this size feature large quantities of horizontal deck framing and a smaller amount of vertical wall framing. At Arena Stage, the opposite was true; the project required 350,000 square feet of wall framing and 140,000 square feet of vertical framing. Much of the concrete was poured for the Cradle Theater's cast-in-place walls, which rise more than 80 feet above the foundation level and slope four degrees out of plumb. The 18 timber columns that support the curtain wall and structural steel roof system are also four degrees off line; setting these integral components properly required working within the tightest tolerances. All trade work was completed in accordance with Arena Stage's strict acoustical requirements.

Already the project is receiving awards for excellence in quality and craftsmanship. Four trades, including cast-in-place concrete, curtain wall, drywall, and structural steel framing earned 2010 Craftsmanship Awards from the Washington Building Congress (WBC). The curtain wall earned the WBC's Star Award for Technical Excellence. The project earned two Excellence in Construction Awards from the local chapter of Associated Builders and Contractors (ABC), and Clark Concrete, the cast-in-place concrete contractor, earned a Pyramid Award in ABC's national Excellence in Construction Awards for their efforts. In September, the expansion and renovation of Arena Stage was named Best Cultural Project and Best Overall Project in Mid-Atlantic Construction's Best of 2010 Awards.

Arena Stage personnel moved into the new space from a temporary facility in August. The first public performance was October 22 and a homecoming and ribbon-cutting ceremony was held October 23.

Bing Thom Architects, Vancouver, Canada, is the project architect. Additional project partners include Fast + Epp, Vancouver, Canada, structural consultant; Yoneda & Associates, Vancouver, Canada, mechanical consultant; Stantec Consulting, LTD, Vancouver, Canada, electrical consultant; Vanderwall Engineers, Alexandria, Va., electrical consultant; Wiles Mensch, Reston, Va., surveyor and civil consultant; Fisher Dachs Associates, New York, theater consultant; and The Talaske Group, Oak Park, Ill., acoustic consultant.

Thirty-Nine Companies Graduate LSDBE Strategic Partnership Program

In June, the owners or executives of 39 small business enterprises celebrated the completion of a comprehensive 10-month education program intended to increase their size, scope, and scale within the construction industry. This was the fourth class of graduates from the Local, Small, and Disadvantaged (LSDBE) Strategic Partnership Program.

Developed in 2006 by Clark Construction Group, in coordination with the Tuck School of Business at Dartmouth College, the program is designed to educate and prepare small business enterprises to work with Clark and other large firms. Many graduates of the past

three programs have gone on to develop mentoring relationships with larger construction industry businesses.

Participants in the LSDBE Strategic Partnership Program met weekly for 10 months. Program courses included the fundamentals of project management, architectural blueprint reading, estimating, purchasing, financial statements and accounting, and insurance and bonding. The program included a capstone project requiring teams of students to submit a small business plan and presentation to a team of Clark executives.

A fifth LSDBE Strategic Partnership Program class began this fall.



Clark Vice President Wesley Stith (back row, center) congratulates the winners of the Strategic Partnership Program's Capstone Project (left to right): Antonio Kornegay (AJK Enterprise LLC), Nicole Tucker (Prism Real Estate and Community Development), Wesley Stith, Letha Robinson (Robinson Interiors, Inc.), Dale Dykes (Touch AV), Nardos Assegahegn (Access Enterprises), and Patrick McRae (Trinity II Corp.)



Clark Vice President Wesley Stith (left), and J. Roberts, Inc., President Eric Sohn (center right) with GSA representatives.

Clark Construction and J. Roberts Join GSA Mentor-Protégé Program

BETHESDA, Md. – Clark Construction Group, LLC, has been selected as a mentor in the General Services Administration's (GSA) Mentor-Protégé Program. Clark has selected Chantilly, Va.-based general contractor J. Roberts, Inc., a certified small disadvantaged business, as its protégé company. Clark will work with J. Roberts over three years, helping the company increase its capacity within the construction industry.

Founded in September 2009, the GSA Mentor-Protégé Program is designed to benefit all categories of small businesses in the construction, professional services/IT, and security services industries. The program's goals include encouraging and motivating small business growth, enhancing protégé capabilities and capacity, increasing access to small business, and increasing opportunity to existing small business schedule holders to increase work. Clark's application to enter the program with J. Roberts was approved by the GSA in July. Clark plans on applying to support additional protégés across the country through this program.

The GSA Mentor-Protégé Program formalizes Clark and J. Roberts' relationship and reaffirms Clark's commitment to developing small businesses. As a joint venture, the two companies recently won a \$16 million contract for the Dulles East Baggage Basement Advanced Utility and Tug Traffic Relocation project at Dulles International Airport in Chantilly, Va.

Clark and J. Roberts have been working together for nearly 10 years on projects including the Department of Transportation Headquarters, NGA Campus East, Largo Town Center/Morgan Boulevard Stations, National Harbor Building L & K, and Pearson Square. Currently, J. Roberts holds subcontracts on two Clark projects, North Bethesda Market in North Bethesda, Md., and DoD/BRAC 133 in Alexandria, Va.

Clark has developed an interactive mentor-protégé program that combines formal classroom training, monthly seminars, and field training. Clark will enhance J. Roberts' construction management and general business skills by providing training in project management, project budgeting, estimating, project control, project purchasing, and risk management.

Clark has a long history of supporting certified business enterprises. Earlier this year, the fourth class of graduates completed the Local, Small, and Disadvantaged Business Enterprise (LSDBE) Strategic Partnership Program. This program, a partnership between Clark and the Tuck School of Business at Dartmouth College, is a comprehensive 10-month education process for small businesses intended to increase their size, scope, and scale within the construction industry. In addition, Clark has met certified business participation thresholds on several notable projects including DoD/BRAC 133, NGA Campus East, Nationals Park and the Walter E. Washington Convention Center.

Remembering Our Friend and Colleague Chris Bucher



LORTON, Va., - Shirley Contracting and Clark Construction Group, LLC, mourn the loss of Senior Vice President **Chris Bucher**. Mr. Bucher, who had been battling cancer, passed away on Saturday, September 4.

Mr. Bucher worked for the company for 26 years, beginning in 1984 as project manager with OMNI Construction. In 1994, he joined Shirley Contracting to help establish their Purchasing Department. Most recently, he oversaw Shirley's operations, purchasing, and marketing efforts. Professionally, Mr. Bucher was a meticulous worker and known for his thoughtful approach to decision-making and his negotiation skills. He was well-respected for always trying to find the best solution for all involved. He will be remembered as a long-time friend to many in the Shirley and Clark organizations, as well as in the local construction industry.

Mr. Bucher graduated from Virginia Polytechnic Institute and State University with a bachelor's degree in civil engineering. He was a devoted Hokies fan and an avid golfer. Most of his free time, however, was spent relaxing with his wife Sherry and daughters Mackenzie and Madison.

People

Brian Flegel Promoted to Sr. Vice President



BETHESDA, Md. –Clark Construction Group is proud to announce that **Brian Flegel** has been promoted to Senior Vice President, Clark Interiors.

Mr. Flegel joined Clark in 1995 as a project engineer and worked on the John Marshall II Building and Westview Operations Center projects. As a project manager, he helped lead our efforts at the Women in Military Service for America Memorial, 1201 F Street, and the Investment Building projects. After his promotion to project executive, Mr. Flegel worked in preconstruction and oversaw multiple projects for Clark Residential, including Dulles Station Building G and the Westin Hotel. He was promoted to Vice President in 2005.

Since Mr. Flegel assumed leadership of Clark Interiors in 2007, the division has been involved in several high-profile projects, including the POD-3 Renovation for the Smithsonian Institution, the fit-out of Constitution Square OB-2 for the U.S. Department of Justice, and the fit-out of Waterfront Station for several Washington, D.C., government agencies. Mr. Flegel has also been responsible for a renovation at Volt, in Frederick,

Md., the restaurant owned by former Top Chef contestant Bryan Voltaggio.

Mr. Flegel holds a bachelor's in architectural engineering from Pennsylvania State University, where he remains active as a member of the Partnership for Achieving Construction Excellence (PACE), a collaborative organization of industry innovators, engineering students, and faculty who work together to achieve excellence in the construction industry.

Steve Hughes Promoted to Vice President



BETHESDA, Md. – Clark Construction Group, is pleased to announce that **Steve Hughes** has been promoted to Vice President.

Mr. Hughes joined Clark in 1994 in the Marketing Department where he was actively involved in producing proposals and the Company's proposal management systems. As marketing manager and later director of marketing, he participated in the acquisition of numerous projects, such as the Walter E. Washington Convention Center, National Museum of the American Indian, and Gannett/USA Today Headquarters.

In 1998, Mr. Hughes took an ac-

tive role in the acquisition of work with certain federal government clients. In this capacity, he developed relationships with new clients, design partners and subcontractors, assisted in the acquisition of work, and served as design manager on multiple design-build projects.

In 2003, Mr. Hughes transitioned into operations as project manager and later senior project manager on multiple projects with the Department of Homeland Security and other government clients. He was promoted to project executive in 2006. In this role, he has been responsible for the continued development of Clark's mission critical business unit. Mr. Hughes has led the acquisition and management of projects including the Power Loft data center in Manassas, Va. and the Mechanical Infrastructure Upgrade for the Department of Homeland Security in Bluemont, Va. In addition to his responsibilities with the mission critical unit, Mr. Hughes has assisted in the pursuit and acquisition of projects throughout the country, including NGA Campus East and DoD/BRAC 133 Project at Marc Center.

Mr. Hughes holds bachelor's degrees in history, English, and political science from High Point University. He is a LEED® Accredited Professional and is actively involved in industry organizations, including the Society of American Military Engineers and the 7x24 Exchange. He also volunteers as a Site Leader for the annual Potomac River Watershed Cleanup.



Clark Construction Group, LLC
7500 Old Georgetown Road
Bethesda, MD 20814
(301) 272-8100
www.clarkconstruction.com

Regional Offices
216 South Jefferson Street, Suite 502
Chicago, IL 60661
(312) 474-5500

2502 N. Rocky Point Drive, Suite 200
Tampa, FL 33607
(813) 636-4422

6720 Via Austi Parkway, Suite 150
Las Vegas, NV 89119
(702) 362-3001

Clark Construction Group - California, LP
575 Anton Blvd., Suite 100
Costa Mesa, CA 92626
(714) 429-9779

7677 Oakport Street, Suite 1040
Oakland, CA 94621
(510) 430-1700

525 B Street, Suite 250
San Diego, CA 92101
(619) 578-2650

Guy F. Atkinson Construction, LLC
11001 W. 120th Avenue, #310
Broomfield, CO 80021
(303) 410-2542
www.atkn.com

600 Naches Avenue, S.W., Suite 120
Renton, WA 98055
(425) 255-7551

Atkinson Contractors, LP
27422 Portola Parkway, Suite 250
Foothill Ranch, CA 92610
(949) 855-9755

Shirley Contracting
8435 Backlick Road
Lorton, VA 22079
(703) 550-8100
www.shirleycontracting.com

Clark Concrete Contractors
7500 Old Georgetown Road
Bethesda, MD 20814
(301) 272-8100

Clark Foundations/Clark Civil
7500 Old Georgetown Road
Bethesda, MD 20814
(301) 272-8110

Clark Real Estate Advisors
7500 Old Georgetown Road
Bethesda, MD 20814
(301) 272-8100

Clark Construction International
7500 Old Georgetown Road
Bethesda, MD 20814
(301) 272-8100

Clark Residential
7500 Old Georgetown Road
Bethesda, MD 20814
(301) 272-8100

Edgemoor Real Estate Services
7500 Old Georgetown Road
Bethesda, MD 20814
(301) 272-2910

Superstructure is published quarterly by Clark Construction Group, LLC, one of the nation's largest providers of construction services.

For more information, contact:
Eric Fulton or Kimberly Wood in
Corporate Communications.

Email: eric.fulton@clarkconstruction.com
or kimberly.wood@clarkconstruction.com



Award-Winning Projects

Several Clark projects across the country recently were recognized for quality, craftsmanship, and safety.

Mid-Atlantic Construction Best of 2010 Awards

Arena Stage Expansion and Renovation
Overall Project of the Year
Cultural Project of the Year

Constitution Square – Office Building 2
Green Building Project of the Year

Constitution Square – Office Building 1
Green Building Project of the Year – Award of Merit

Waterfront Station
Office Building Project of the Year

Dulles Tier 2/Concourse C APM Station –
Concourse C Connector
Transportation Project of the Year

California Construction Best of 2010 Awards

Tom Bradley International Terminal Interior Improvement and
Baggage Screening Systems Project @ LAX
Transportation Project of the Year – Award of Merit

Southwest Contractor Best of 2010 Awards

VA Las Vegas Phase III Nursing Home
Nevada Healthcare Project of the Year

Associated Builders and Contractors of Metropolitan Washington Excellence in Construction Awards

901 K Street
Commercial Construction Project, Over \$40 million

North Bethesda Market
Specialty Construction – Concrete
Work self-performed by Clark Concrete Contractors

Washington Contractor Awards – Presented by Associated General Contractors of Metro DC

Arena Stage Expansion and Renovation
Winner – Renovation/Restoration Category

Dulles Tier 2/Concourse C APM Station – Concourse C
Connector
Award of Merit – Heavy/Industrial Category

Clark Construction Group, LLC
Winner – Company Safety Program, Corporate Safety Awards