



Superstructure

New Social Security Administration Campus Underway in Baltimore

BALTIMORE – A January groundbreaking signaled the start of construction on the Social Security Administration's new, 538,000 square-foot facility in northwest Baltimore that will be home to more than 1,600 administration employees. JBG/Baltimore SSA, LLC, awarded **Clark Construction Group, LLC**, a contract to construct the Social Security Administration Metro West project's 11-acre campus, located directly opposite the Reisterstown Metro Station.

Clark completed demolition of an existing Maryland Transit Authority training complex and will soon begin construction of the two office buildings, five and seven stories, connected by a seven-story atrium. Additional components include a 1,079-space parking garage and a standalone, 90-student daycare center. The scope of work also includes integrating complex landscape and hardscape designs composed of brick paver walkways, elaborate planting schemes, and site security provisions. The team will install anti-terrorism/force protection measures, which include blast-resistant precast and glass, two exterior entry vestibules, and perimeter anti-ram walls.

The project is designed to earn LEED® Silver certification. Among the campus' sustainable elements are a green roof, a large park, bioretention



Social Security Administration Metro West project, Baltimore (Rendering courtesy of AECOM)

ponds, and green screens. The Reisterstown Metro Station is one of 14 sites Governor Martin O'Malley designated across the State under Transit-Oriented Development legislation as a component of his Smart, Green and Growing initiative. The Maryland Department of Transportation entered into an agreement with the U.S. General Services

Administration to locate the office complex on 11 acres of station property, which helps the federal government achieve its sustainability goals and the state grow transit ridership and its economy.

The Social Security Administration Metro West project is expected to be complete in the first quarter of 2014.

The JBG Companies, Chevy Chase, Md., in partnership with Klein Enterprises, a Baltimore-based real estate firm, will develop and own the property and lease it back to the Social Security Administration pursuant to a 20-year lease with the GSA. AECOM is the project architect.

After 18 Years, L.A.'s Hall of Justice is Coming Back to Life

LOS ANGELES – The Los Angeles County Board of Supervisors selected **Clark Construction Group – California, LP**, to renovate the County's historic Hall of Justice. Clark, along with design partner A.C. Martin of Los Angeles, was awarded a \$151 design-build contract for structural, architectural, and aesthetic upgrades to the 1920s-era building. The Hall of Justice, L.A.'s former county jail, has been closed since it was damaged in the 1994 Northridge earthquake. The Los Angeles Sheriff's Department and members of the Los Angeles County District Attorney's staff – both former tenants of the building – will occupy the new space.

When the 335,000 square-foot Hall of Justice re-opens in 2014, it will feature seismic upgrades, 308,000 square feet of office space, new interior shear

walls and drag beams, and new MEP systems that tie into the building's existing central plant. Additional renovations include a new museum area, kitchen, and removing two floors of former jail cells to create head room for office space. In addition, the project includes a 1,000-space parking structure.

Preserving the historic building's original aesthetic, the project team will clean all exterior granite, restore the loggia and staircases, and refurbish all elevator cabs and entrances. The Hall of Justice project team anticipates earning LEED® Gold certification, exceeding the job requirement of LEED Silver at no additional cost to the County.

Clark and A.C. Martin have been working with Los Angeles County on the design since last year. The team expects

continued on p. 4



Hall of Justice, Los Angeles (Photo by Williams Art Conservation, Inc.)

Mixed-Use Construction Project to Revitalize D.C.'s Shaw Neighborhood

WASHINGTON, D.C. – **Clark Construction Group, LLC**, broke ground on Roadside Development's City Market at O Street project late last year. The one million square-foot mixed-use development in the city's Shaw neighborhood is one of 14 infrastructure projects around the country selected by the Obama administration to be expedited through the permitting and environmental review process.

The \$124 million project will help revitalize Shaw between 7th, 9th, O, and P streets, NW. The project's first phase includes building two nine-story apartment towers, a 72,000 square-foot Giant supermarket (the largest in the city), a two-story below-grade parking garage, 300 indoor bicycle parking spaces, a 270 linear-foot rooftop dog park, and market retail space. The project team also will rehabilitate the historic O Street Market building, which was constructed in 1881 as one of the five original brick markets in Washington, D.C. Clark will orchestrate the restoration of the market's brick façade and tower and the installation of a new standing-seam metal roof, exposed metal trusses, windows, and a skylight.

continued on p. 4



City Market at O Street, Washington, D.C. (Rendering courtesy of Shalom Baranes)

At LAX, State-of-the-Art Central Utility Plant is Taking Shape

LOS ANGELES – In January, the final piece of 1,400 tons of structural steel was lifted into place, completing the frame for Los Angeles International Airport's (LAX) new central utility plant

(CUP). **Clark Construction Group – California, LP**, in a joint venture with McCarthy Building Companies, is leading the \$438 million (development cost) design-build project, which

is on pace for completion in summer 2014.

The new CUP will replace the airport's existing, 50-year-old facility with a state-of-the-art, computer-man-

aged utility plant. The project features an innovative cogeneration turbine that will produce enough electricity and steam to power a second set of generators to meet cooling and heating requirements throughout the airport. This strategy reduces fuel consumption by up to 30 percent. The new CUP also will be 60 percent more efficient in producing chilled water by using a 1.6 million gallon thermal-energy storage (TES) tank. Water will be cooled at night, eliminating the need to use the 3,200 ton chiller during peak hours. Designed to optimize passenger comfort, improve service reliability and energy-efficiency, the project is targeting LEED® Silver certification.

In addition to designing and constructing the CUP, Clark/McCarthy's scope of work includes installing associated equipment, constructing approximately 18 miles of pipe and duct bank to serve the central terminal area, upgrading existing pump rooms and air handling equipment, and demolition of the airport's existing CUP upon completion of the new facility.

Gruen Associates, Los Angeles, is the project architect. Additional project partners include Arup, Los Angeles, mechanical, electrical, plumbing, structural, and commissioning engineer; Capital Engineering Consultants, Rancho Cordova, Calif., mechanical consultant; Greenform, Los Angeles, sustainability consultant; and PID Engineering, San Diego, cogeneration consultant.



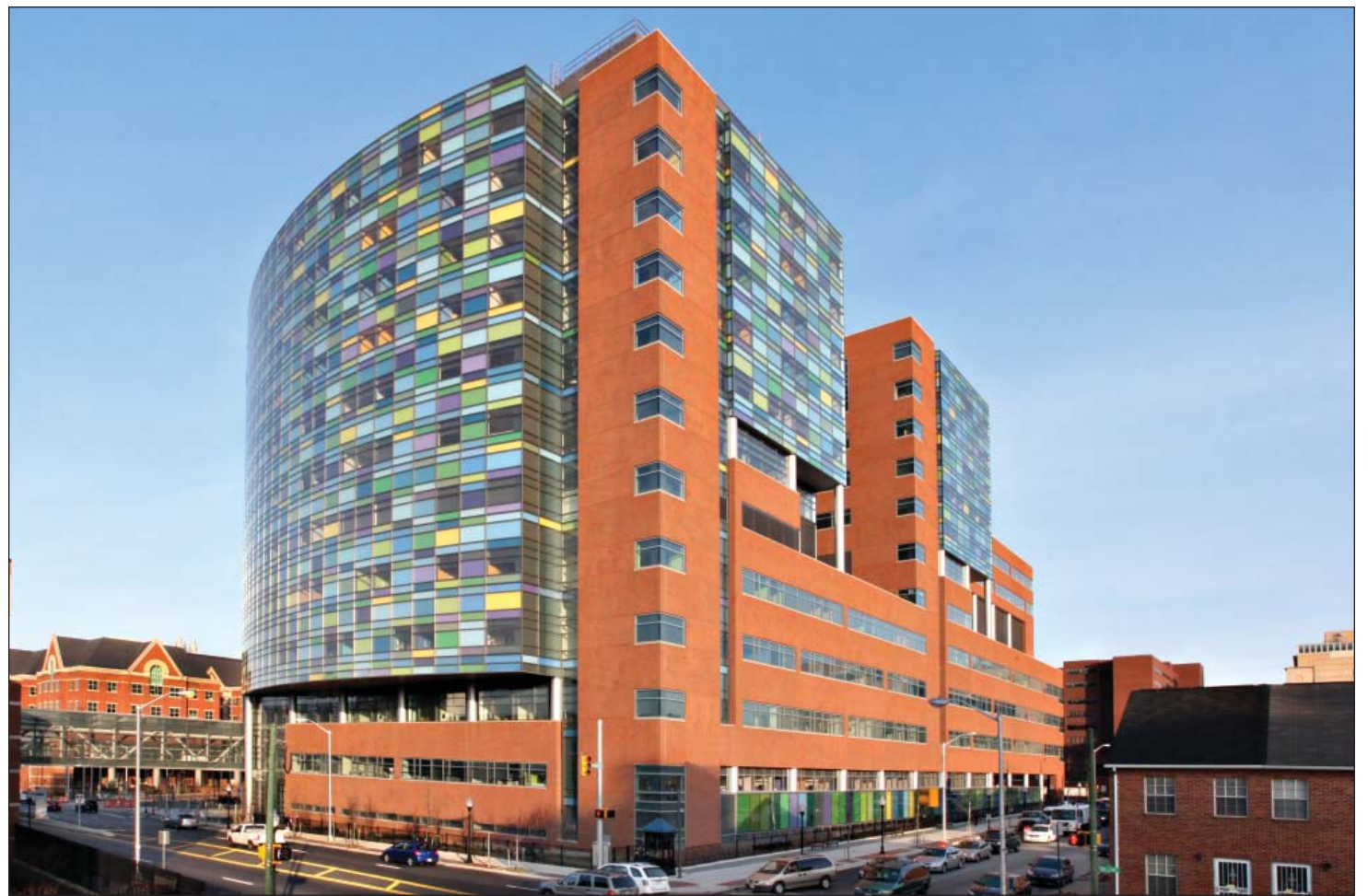
Schuff Steel places the ceremonial steel beam on the top of the LAX Central Utility Plant, Los Angeles

Clark/Banks Team Reaches Substantial Completion of The Johns Hopkins Hospital's New Patient Care Building

BALTIMORE – Capping five years of construction and eight million man hours of work, **Clark/Banks, A Joint Venture** has reached substantial completion of a new expansion of The Johns Hopkins Hospital. The 1.6 million square-foot, 560-bed facility on a five-acre site is the centerpiece to Johns Hopkins Medicine's downtown Baltimore campus redevelopment. The \$750 million building features two connected 12-story towers. It was designed and constructed to provide a healing environment to enhance the patient experience. The building features some of the most advanced medical technology available. The hospital will open to patients in April 2012.

Together, the Sheikh Zayed Tower and the Charlotte R. Bloomberg Children's Center have 560 private patient rooms (355 adult and 205 pediatric), new emergency departments for adult and pediatric patients, 33 operating rooms, 42 radiology suites, 13 non-invasive treatment areas, and 16 gastrointestinal and pulmonary diagnostic and treatment areas. The facility also will house The Johns Hopkins Heart and Vascular Institute. The hospital interconnects with the Harry and Jeanette Weinberg Building and the Nelson/Harvey Building to form a state-of-the-art healthcare campus.

The building's striking exterior façade features 275,000 square feet of curtain wall and 210,000 square feet of thin brick-faced precast panels. Spencer Finch, the New York installation artist who designed the vibrant color palette featuring multiple shades of green and blue, drew his inspiration from French impressionist painter Claude Monet. The brush-stroked glass frit pattern, also developed by Finch,



The Johns Hopkins Hospital New Patient Care Building, Baltimore (Photo by Sisson Studios, Inc.)

represents light reflecting off water. Finch's strokes were put into a computer model and ultimately etched on one layer of glass and sandblasted on another, to convey the glass as more of a liquid than solid and add depth to the curtain wall.

Perkins+Will, Los Angeles, led the project's design team. To promote a healing environment, the hospital's interior features natural surfaces, natural light-filled rooms, and numerous

sound-absorption materials.

Construction of the new hospital building began in October 2006. To maintain a focus on creating the most functional and technologically-advanced facility, Clark/Banks established an extensive mockup program and relied heavily on end-user feedback. The construction team built more than 100 off-site or in-place mockups to evaluate everything from the mechanical systems to medical equipment place-

ment. Throughout construction, Johns Hopkins Medicine's facilities personnel, medical staff, and administrators toured these facilities and reviewed BIM models to evaluate functionality and provide feedback.

Bard, Rao + Athanas Consulting Engineers, LLC, Boston, is the mechanical and electrical consultant. Thornton Tomasetti, Washington, D.C., is the structural consultant.

Press Box Renovation is a Part of Large-Scale Rose Bowl Rehabilitation

PASADENA, Calif. – The Rose Bowl Operating Company awarded **Clark Construction Group – California, LP**, a \$39 million contract for the Rose Bowl Press Box Suites project. The award comes as the famed stadium is in the midst of a three-year renovation and improvement effort.

The Rose Bowl's press box facility will be rebuilt and expanded to five times its original size. Clark will replace the existing skin with a new stucco and storefront façade. The project team also will be responsible for the interior build-out of the stadium's press box suites and will install a state-of-the-art video replay system.

Clark began construction in late 2011. Completion is scheduled for April 2013, however a majority of the work will be complete prior to the first scheduled college football game on September 8, 2012.

D'Agostino Izzo Quirk Architects,

Inc., Somerville, Mass., is the project architect. Project partners include Thornton Tomasetti, Los Angeles, structural engineer; Syska Hennessey Group, Los Angeles, MEP engineer; W2 Design, Pasadena, civil engineer;

Earth Systems Southern California, Pasadena, geotechnical engineer; EPT Design, Pasadena, landscape architect; Historic Resources Group, Hollywood, Calif., historic preservation consultant; Howe Engineering, Norwall, Mass.,

life safety consultant; KPFF Consulting Engineers, Pasadena, shoring engineer; and Bernards/Barton Marlow, Pasadena, construction management.



Rose Bowl Press Box Suites, Pasadena, Calif.

Clark's Illinois Projects Take Shape

CHICAGO – Two new projects in **Clark Construction Group, LLC's**, Northern Region are taking shape – one in the ground, and one on paper.

Argonne National Laboratory Energy Sciences Building

Concrete has been poured for a majority of the Argonne National Laboratory Energy Sciences Building's (ESB) structure in anticipation of a spring top out. Clark broke ground on the 160,000 square-foot project last year. The \$63 million contract includes constructing a four-level facility, with one level below grade, and a mechanical penthouse.

The ESB's 50,000 square feet of state-of-the-art laboratory space is designed to accommodate research at the subatomic level and will be isolated from acoustic vibration, or electromagnetic interference.

When it is complete in 2013, the ESB will replace an outdated facility. The research efforts to be conducted in the new facility include the development of highly-reliable, safe, and long-lived battery systems; revolutionary, efficient, and environmentally-friendly chemical transformation processes for creating novel feedstocks and fuels; and transformational systems for solar energy production.

Designed to achieve LEED® Gold certification, the ESB will incorporate an electromagnetic solar control glazing system to increase energy efficiency. This system will automatically adjust the tint of windows in response to interior heat levels and interior and exterior light levels.

HDR Architecture, Chicago, is the project architect and Jacobs Engineering, Chicago, is the construction manager.

Hyatt Regency McCormick Place

In downtown Chicago, design work is nearly complete on the Hyatt Regency McCormick Place expansion. **CBG Design Builders**, a Clark-led joint venture that also includes local general contractor and renovation specialist Bulley & Andrews, LLC, and Chicago-

based Goettsch Partners, Inc., architect of record, was awarded an \$86 million design-build contract by the Metropolitan Pier and Exposition Authority (MPEA) last year.

The project will add a 14-story tower with approximately 461 guest rooms to the existing 800-room hotel. The tower, to be built on top of an existing parking garage, will be comprised of structural steel trusses supporting a concrete frame. An exterior of precast concrete and glazing elements will match the hotel's existing aesthetics.

In addition to the new construction, the project team will renovate significant portions of the existing hotel, including all 800 guest rooms, and perform upgrades to the front lobby, business center, fitness center, and food services areas. The scope of work also includes renovating meeting rooms and constructing a junior ballroom at the McCormick Conference Center.

The project is designed to achieve LEED certification. Sustainable initiatives include adding a green roof and improving the McCormick Energy Center.

The renovations and expansion work will be complete by June 2013.

This is Clark's fourth contract with the MPEA at McCormick Place. The company completed the original 32-story Hyatt Regency Hotel in 1998 as part of the 2.5 million square-foot South Building convention center in 1996. Clark also completed the 2.7 million square-foot West Building expansion in 2007.

Old Veteran Construction, Inc., of Chicago, is assisting the construction team with general contracting and construction management services. Additional Chicago-based project partners include Primera Engineers, Ltd., MEP engineer; Anderson Miller, Ltd., interior designer; and Magnusson Klemencic Associates, structural engineer. McKissack and McKissack Midwest, Inc., is providing quality assurance and quality control oversight.



Argonne National Laboratory Energy Sciences Building, Lemont, Ill. (Rendering courtesy of HDR Architecture)



Hyatt Regency McCormick Place, Chicago (Rendering courtesy of Goettsch Partners, Inc.)

After 18 Years, L.A.'s Hall of Justice is Coming Back to Life *continued*

final completion of the design package in April. Initial construction activities, including selective demolition of the existing structure and excavation for the new parking garage, will begin as early as March.

In addition to A.C. Martin, project partners include AECOM, Los Angeles, tenant improvement architect; Englekirk & Sabol, Los Angeles, structural engineer; Syska Hennessy Group, Los Angeles, MEP engineer; VCA Engineers, Inc., Los Angeles, civil engineer; Levin & Associates Architects, Los Angeles, historical

consultant, Murray Companies, Rancho Dominguez, Calif., and Critchfield Mechanical, Irvine, Calif., mechanical and plumbing contractors; and Dynalectric, Los Alamitos, Calif., electrical contractor. Project consultants include Simon Wong Engineering, Los Angeles, mechanical engineer; and Katherine Spitz Associates, Marina Del Rey, Calif., landscape architect. The Department of Public Works will be managing the project for the County.

Mixed-Use Construction Project to Revitalize D.C.'s Shaw Neighborhood *continued*

Future phases of City Market at O include retail and restaurants, a 182-room Cambria Suites hotel, a condominium tower, and a senior living complex.

City Market at O is considered a landmark project for the U.S. Department of Housing and Urban Development and is the only mixed-use project among those fast-tracked by the White House. The project is expected to attract 1,000 new residents to the Shaw neighborhood. City Market at O's residential component includes 150 high-end condominiums, 400 market-rate apartments, and 86 affordable units set aside for seniors.

The first phase of City Market at O will be complete in early 2014.

Shalom Baranes, Washington, D.C., is the project architect. Additional project partners include investor Bernstein Management of Washington, D.C.; Tadjer-Cohen-Edelson Associates, Silver Spring, Md., structural engineer; Wiles Mensch Corporation, Reston, Va., civil engineer; Girard Engineering, Falls Church, Va., MEP engineer; and Lee and Associates, Washington, D.C., landscape architect.

Spotlight on Small Business

BETHESDA, Md. – Clark's Subcontractor Development Group (SDG) facilitates and manages the company's efforts to identify, train, and counsel local, small, and disadvantaged businesses. Part of the Preconstruction Services Department, SDG employees develop mentor/protegé relationships, organize community outreach events for projects, ensure project compliance with Federal Acquisition Regulations, and administer Clark's Strategic Partnership Program. Over the past year, the SDG has found new ways to engage small businesses across the country.

Strategic Partnership Program Debuts in Southern California

Last fall, Clark expanded its Strategic Partnership Program to Southern California. Eighteen small and local businesses are part of the nine-month executive MBA-style program designed to improve construction management and overall skills.

With instruction from veteran Clark employees and experts from companies such as Glenn M. Gelman & Associates and Merriwether & Williams Insurance Services, the program's curriculum combines interactive classroom instruction, team projects, and presentations. Participants study a range of business and construction topics including project management, insurance and bonding, estimating, and purchasing. The program culminates with a capstone project presentation to industry leaders.

The program's 18 participants were selected through an application process. A majority of the companies, which include businesses specializing in earthwork, drywall, woodworking, solar/electrical, and testing and inspection, have more than three years of industry experience.

Since its inception in the Washington, D.C., area in 2006, more than 175 small business owners have graduated from the program.

Clark's Western Region plans to begin a second Strategic Partnership Program class this summer.

Clark Selected to Mentor Two Veteran-Owned Companies

In December, the Department of Veterans Affairs Office of Small and Disadvantaged Business Utilization selected Clark as a mentor to two companies through its 2011 Veteran-owned Small Business Mentor-Protégé Program (VOSB MPP). Over the next two years, Clark will partner with Athena Construction Group of Dumfries, Va., and EG Montanez Construction, Inc., of Anaheim, Calif.

Mentors in the VOSB MPP provide developmental assistance to the protégé companies in order to enhance their capabilities to perform as prime contractors and subcontractors on VA procurements. Clark's Subcontractor Development Group developed a two-year curriculum for Athena and EG Montanez that combines classroom training with on-the-job experiential learning.

Seven Small Businesses Step Toward Becoming General Contractors

In February, seven Washington, D.C.-area small businesses became the first class to complete Clark's General Contractor Training Course. The six-month course was developed for Strategic Partnership Program graduates and other companies interested in growing their businesses and becoming general contractors.

The General Contractor Training Course is a comprehensive initiative offering technical assistance in general

contracting principles to small businesses. The inaugural program was led by Joe H. Smith, a former Clark Vice President who retired after 29 years of service to become a professor in the Construction Management Department of Montgomery College.

Executives from the seven small businesses attended biweekly classes that explored different facets of the construction industry, including estimating, change orders, scheduling, safety, purchasing, and quality control. The course also provided advanced constructing business training on contracts, cash management, and documentation.

Houston Construction Program Developed for Emerging Businesses



Clark Vice President Wes Stith speaks at a reception for the Building and Contracting Leadership Program as Houston Mayor Annise Parker looks on.

A first-of-its-kind program in Houston is helping local and independent contractors improve their construction management and business skills. Nineteen local companies, with experience ranging from one to 10 years, are part of the initial Building and Contracting Leadership Certificate Program at Houston Community College. Clark is one of the program's two main sponsors and provides scholarship assistance and course materials to participants.

Class members, including commercial subcontractors looking to expand their businesses and residential contractors looking to move into the commercial market, attend weekly classes at the college. During the inaugural program, a Clark senior project manager attends every other class session to walk the students through a standard subcontract agreement.

"This is exactly the type of partnership we need to encourage more small business owners and independent contractors to seek the skills needed to grow their businesses."

Dr. Mary Spanger
Chancellor
Houston Community College

"RBT has been given an opportunity to strengthen our construction management skills, which will only make us more competitive in today's challenging economic climate. Programs like this demonstrate Clark's level of commitment to the success of small businesses."

Ryan Tittsworth
Chief Executive Officer
RBT Electric



Strategic Partnership Program participants review drawings during class.

A Testament to Quality

Subcontractors on numerous Clark projects in the Mid-Atlantic Region were recently honored for the quality of their work with a Washington Building Congress Craftsmanship Award.

800 North Glebe Road Tower

Concrete – Cast-in-Place
Clark Concrete

1812 North Moore

Sitework – Underpinning, Foundations
and Excavations
Clark Foundations

DoD/BRAC 133 at Mark Center

Finishes – Drywall
Gymbar & Tricon Construction

Metals – Ornamental Metals
Accent Architectural

Special Construction – Active Vehicle Barriers
Total Automation Group

Woods & Plastics – Architectural Millwork
Jefferson Millwork & Design

Founders Square

Doors & Windows – Curtain Wall
Tidewater Glazing

Finishes – Ceramic Tile and Terrazzo
Boatman and Magnani

NGA Campus East

Sitework – Landscaping
KT Enterprises

Woods & Plastics – Architectural Millwork
ISEC, Inc.

Special Construction – Elevators, Escalators
and other Conveying Systems
ThyssenKrupp Elevator Americas

Special Construction – Thermal and Moisture
Protection
Prospect Waterproofing

U.S. Coast Guard Headquarters Building

Concrete – Cast-in-Place Concrete
Clark Concrete

Walter Reed National Military Medical Center

Mechanical – Plumbing
Southland Industries

Washington Harbour

Electrical – Power Generation, Distribution
and Switchgear
Mona Electric



Award-winning projects 1812 N. Moore and 800 N. Glebe Road Tower

And the Winner is ...

Clark Projects Earn National Awards from Media and Trade Groups



Square 54, Washington, D.C. (Photo by Jim Tetro Photography)

Company projects have earned several awards in the past few months. Here are some recent additions to our trophy case.

Alliant Build America Award, Associated General Contractors of America

NGA Campus East

Building Construction – New

Early contractor involvement was critical to delivering this 2.4 million square-foot campus ahead of schedule and accommodating the tenant's phased move-in.

Walter Reed National Military Medical Center

Design-Build – Award of Merit

Clark developed more than 40 different logistics and infection-control plans for the project's 450,000 square-feet of renovations, and finished with a punch list of less than 100 items.

Marvin M. Black Partnering Award, Associated General Contractors of America

NGA Campus East

Collaborative "One Team" partnering aligned stakeholders to a common goal. Team evaluations, global climate surveys, and blind spot studies kept the team on track throughout construction.

Excellence in Construction Award, Associated Builders and Contractors

U.S. Coast Guard Headquarters Building

Sitework/Excavation – Pyramid Award

The Metro/Total JV (Metro Earthworks is a subsidiary of Shirley Contracting) excavated 1.6 million cubic yards of soil for the foundation of this 1.2 million square-foot campus.

Best of the Best Award, 2011 Engineering News-Record

Square 54

Best Mixed-Use/Retail Project

Clark's approach to this mixed-use project's logistical and craftsmanship challenges were cited by the judges, but Square 54's "remarkable" safety record made it truly stand out.

U.S. Institute of Peace Headquarters Best Office Building

Award judges praised Clark's ability to manage budget, schedule, and logistics, noting that "the craftsmanship shown with the completed structure is extremely impressive."

People

Jeff Austin Promoted to Vice President



LORTON, Va. – Shirley Contracting Company is pleased to announce that **Jeff Austin** has been promoted to Vice President.

Mr. Austin joined Shirley in 2000 as project

manager on the Springfield Interchange Phase IV project. In 2004, he moved to the company's design-build office in Dulles, Va., as contract manager. In that role, he has worked on the front end of many of Shirley's successful design-build projects, collaborating with owners and project partners on contract administration and plan development including design, environmental permitting, right-of-way acquisition, and utility coordination efforts. These projects include Route 28 Corridor Improvements, the Dulles Greenway Capital Improvements Program, Fairfax County Parkway Phase III, Battlefield Parkway, and the Pacific Boulevard Design-Build Project.

Currently, Mr. Austin is working on three of Shirley's newest design-build endeavors: the Route 50 Widening Design-Build, the University Boulevard PPTA, and the Pacific Boulevard Extension projects. Prior to joining the company, Mr. Austin spent eight years as a civil engineer and owner's representative with a local civil consulting and construction management firm.

Mr. Austin has a bachelor's degree in civil engineering from Virginia Polytechnic Institute and State University and is a licensed professional engineer in Virginia.

Mark Chandler Promoted to Vice President



BETHESDA, Md. – Clark Construction Group is pleased to announce that **Mark Chandler** has been promoted to Vice President.

Mr. Chandler joined Clark in 1994

as an assistant project manager on the University of Maryland – Byrd Stadium Concourse/Upper Deck project. He soon became an assistant superintendent and began a career in the field on projects such as the University of Maryland Campus Recreation Center, Building E at Tysons II, Reston Sunrise Phase II, and South County High School. Mr. Chandler was promoted to construction executive

in 2008 while at National Harbor Building K.

Most recently, Mr. Chandler was part of the DoD/BRAC 133 project team. Working with a staff of 20 field personnel, he led construction of a 17-story and a 15-story office tower, two parking garages, a visitor center, transportation center, truck inspection facility, and extensive sitework, all delivered ahead of schedule.

Currently, Mr. Chandler is responsible for field operations at CityCenterDC, a \$425 million mixed-use complex in downtown Washington, D.C., that includes two office buildings, four residential buildings, and a one million square-foot parking garage.

Mr. Chandler graduated from Syracuse University with a bachelor's degree in architecture. He is active with the Field Development Group and recently helped develop its new curriculum. Mr. Chandler is a past chairman of Clark's Superintendent Steering Committee and has been a Team Clark Leader.

Lee DeLong Promoted to Vice President



NASHVILLE – Clark Construction Group is pleased to announce that **Lee DeLong** has been promoted to Vice President.

Mr. DeLong joined Clark in 2001 as project

manager on the Discovery Communications International Headquarters project in Silver Spring, Md. He was promoted to senior project manager in 2005 and managed 1601 K Street and 300 New Jersey Avenue in Washington, D.C.

In 2007, Mr. DeLong was promoted to project executive and led project teams in building Redland Technology Center, North Bethesda Market, 900 North Glebe Road, and completing the Howard Hughes Medical Institute Expansion.

Currently, Mr. DeLong is responsible for Music City Center in Nashville. The \$427 million convention center, on a 16-acre site, will include 1.2 million square feet of assembly space and 1,800 parking spaces.

Mr. DeLong earned a bachelor's degree in civil engineering from the University of Virginia. He has been a Team Clark leader, CCU Instructor, Boot Camp Mentor, PM Steering Committee member, and a BUIILD participant. Prior to joining Clark, he served in the U.S. Army as a combat engineer officer.

Mr. DeLong serves on the Middle Tennessee Associated General Contractors Board of Directors. He is active with the Nashville chapters of the ACE Mentor Program, Urban Land Institute, and National Association of Industrial and Office Properties.

Matt Haas Promoted to Vice President



BETHESDA, Md. – Clark Construction Group is pleased to announce that **Matt Haas** has been promoted to Vice President.

After interning with the company in 1997, Mr. Haas joined Clark as an

office engineer in 1998 on the Secret Service Headquarters project in Washington, D.C. He was promoted to project manager while working on the Chevy Chase Bank Headquarters project and, in that role, led Clark's efforts building the Gateway International 3, Heritage Center Building IV, and multiple classified projects. Mr. Haas then became part of the National Operations Group before returning to the field to lead two projects for Clark Mission Critical.

In 2005, Mr. Haas was promoted to project executive and helped lead the \$442 million Nationals Park project in Washington, D.C. After completing the ballpark, he was part of several successful pursuits, including the U.S. Coast Guard Headquarters and USAMRICD projects. Mr. Haas also was the project executive on the Virginia Tech Research Institute in Arlington, Va.

Currently, Mr. Haas is responsible for CityCenterDC, a \$425 million mixed-use complex in downtown Washington, D.C., that includes two office buildings, four residential buildings, and a one million square-foot parking garage. In his new role as Vice President, Mr. Haas leads Clark's community relations efforts in the District of Columbia.

Mr. Haas has a bachelor's degree in building construction from Virginia Tech. He is a LEED® Accredited Professional and has been a CCU instructor, Team Clark Leader, Boot Camp Mentor, and BUIILD participant. Mr. Haas represents Clark on the Industry Board of Virginia Tech's Myers-Lawson School of Construction, is active with Associated Builders and Contractors of Virginia and sits on the District of Columbia Building Industry Association Board of Directors.

Tom Kenton Promoted to Vice President



BETHESDA, Md. – Clark Construction Group, LLC, is pleased to announce that **Tom Kenton** has been promoted to Vice President.

Mr. Kenton joined Clark's

Purchasing Department in 1984 after

working with the company as an elevator subcontractor. As a project manager, Mr. Kenton was a member of several Mid-Atlantic Region project teams including Columbia Square, TechWorld, the National Maritime Intelligence Center, and Patuxent Naval Air Station. Mr. Kenton then assisted with the company's national bid team, travelling across the country pursuing new work. As part of the Walter E. Washington Convention Center project, he was responsible for purchasing as well as community relations efforts.

In 2006, as project executive, Mr. Kenton joined the Nationals Park project team and led purchasing and certified business (CBE) outreach including the award of \$205 million (51% of all contracts) to CBE firms. Mr. Kenton also led purchasing and federal small business outreach and reporting efforts on the Walter Reed National Military Medical Center project. Currently, he holds similar responsibilities at the U.S. Coast Guard Headquarters Building and is working with the U.S. Government Services Administration on permanent site utilities and roadwork.

Mr. Kenton has a bachelor's degree in industrial management from Georgia Institute of Technology.

Matt O'Malley Promoted to Vice President



BETHESDA, Md. – Clark Construction Group is pleased to announce that **Matt O'Malley** has been promoted to Vice President.

Mr. O'Malley joined Clark in 2000 as an office

engineer in the Mid-Atlantic Region's Estimating Department. In 2002, he moved to the IMF Headquarters project team where he was promoted to project manager. Mr. O'Malley returned to Clark's Bethesda office to work in preconstruction in 2005. He was promoted to preconstruction executive in 2007, and later became one of the first team leaders in the Mid-Atlantic Preconstruction Services Group, leading pursuit teams on several successful projects, including the FDA Consolidated Center for Biologics Evaluation and Research.

Mr. O'Malley currently manages preconstruction services with private clients on several major projects in the Washington, D.C., area, and focuses on the acquisition of private-sector opportunities. Additionally, he works with team leaders in the department and is responsible for glass and glazing purchasing in the Mid-Atlantic Region.

Mr. O'Malley has a bachelor's in architecture from the University of Virginia, a master's in real estate from Johns Hopkins University, and a master's in business administration from the

continued on p. 8

Community Service Efforts Recognized by AGC

In March, Associated General Contractors of America presented an AGC in the Community Award to Clark Construction Group for the collective community service efforts of six Base Realignment and Closure (BRAC) initiative project teams.

The teams, operating on military facilities in California, Maryland, Texas, and Virginia, carried out a coordinated initiative to perform dozens of community service and outreach projects to benefit the community, the bases where construction was taking place, and our nation's service men and women and their families.

The project teams' total efforts involved employees volunteering hundreds of hours over a four-year period. The group's accomplishments



Members of the San Antonio Military Medical Center project team worked with injured veterans interested in careers in construction during the site's Enable America mentor/protégé day.

included organizing the first civilian contractor blood drive at a military hospital, hosting mentor/protégé days with wounded warriors through Enable America, partnering with Team River

Runner to assist in soldiers' physical rehabilitation, hosting multiple Toys for Tots and food drives, and sponsoring "Friday Night Dinners" for injured soldiers and their families.

People continued

Robert H. Smith School of Business at the University of Maryland. He is the chair of the District of Columbia Building Industry Association's (DCBIA) Commercial Construction Committee and Vice President of their Community Service Corporation Board. Mr. O'Malley also chairs the Urban Land Institute Washington's Real Estate 101 Series and sits on the steering committee of NAIOP of MD/DC's Real Estate Emerging Leaders group. In addition, he teaches construction management courses part time at Georgetown University and the University of Maryland.

Garry Palleschi Promoted to Vice President



LORTON, Va. – Shirley Contracting Company is pleased to announce that **Garry Palleschi** has been promoted to Vice President.

Mr. Palleschi joined Shirley's Estimating Department

in 1996 before becoming involved in the company's purchasing efforts. Most recently manager of business development, Mr. Palleschi was integral in the acquisition of numerous projects including the Route 28 Corridor Improvements Project, the University Boulevard and Spotsylvania County PPTA projects, and design-build projects at Pacific Boulevard, Battlefield Boulevard, the Fairfax

County Parkway, and Route 50.

As Vice President, Mr. Palleschi will continue to concentrate on Shirley's marketing, business development, and the acquisition of public-private partnership and design-build projects.

Mr. Palleschi has an associate's degree in Building Construction from the State University of New York – Delphi, a bachelor's degree in business administration from George Mason University, and a master's in business administration from Marymount University.

Greg Smith Promoted to Vice President



LORTON, Va. – Shirley Contracting Company is pleased to announce that **Greg Smith** has been promoted to Vice President.

Since joining Shirley in 2000 as a project engineer

on the Route 28/29 Interchange Project, Mr. Smith has successfully delivered a number of Shirley's projects. As a project manager, he was responsible for the North-South Construction Service Road and IAD-Utilities Physical Enhancements projects for the Metropolitan Washington Airport Authority, as well as several components of the Route 28 Corridor Improvements Project. As a senior project manager, Mr. Smith led the East Market Street Soundwall project team and, as contract manager, he oversaw the Haymarket – Latsios Waterline Loop Closure and I-66 Improvement projects.

Currently, Mr. Smith has responsibility

for several roadway projects, including Main Post Improvements Phase I and Phase II at Fort Belvoir, Route 29/Linton Hall Interchange Improvements in Gainesville, Opal Improvements in Fauquier County, and Eskridge Road Improvements in Falls Church.

Mr. Smith has a bachelor's degree in civil engineering from the University of Virginia. He is a professional engineer licensed in Virginia and a Grade I American Concrete Institute Concrete Technician.



In 2011, our Western Region launched Get2Know Clark, an email series designed to educate our employees on our company's rich history, breadth of services, extensive portfolio, and strong corporate culture. This January, we extended the communication initiative to our clients and project partners in hopes of giving them an in-depth look at our company, people, culture, achievements – both at the individual and organizational level, and last but certainly not least, our commitment to the community.

If you are interested in getting to know Clark and would like to receive our email communications, please visit www.clarkconstruction.com and click on the envelope icon in the lower left corner of the screen to register.

CLARK CONSTRUCTION

Clark Construction Group, LLC

7500 Old Georgetown Road
Bethesda, MD 20814
(301) 272-8100
www.clarkconstruction.com

Regional Offices

216 South Jefferson Street, Suite 502
Chicago, IL 60661
(312) 474-5500

2502 N. Rocky Point Drive, Suite 200
Tampa, FL 33607
(813) 636-4422

Clark Construction Group - California, LP

575 Anton Blvd., Suite 100
Costa Mesa, CA 92626
(714) 429-9779

7677 Oakport Street, Suite 1040
Oakland, CA 94621
(510) 430-1700

525 B Street, Suite 250
San Diego, CA 92101
(619) 578-2650

Guy F. Atkinson Construction, LLC

385 Interlocken Crescent, Suite 250
Broomfield, CO 80021
(303) 410-2542
www.atkn.com

600 Naches Avenue, S.W., Suite 120
Renton, WA 98055
(425) 255-7551

27422 Portola Parkway, Suite 250
Foothill Ranch, CA 92610
(949) 855-9755

1777 Neptune Drive
San Leandro, CA 94577
(510) 483-1011

Shirley Contracting

8435 Backlick Road
Lorton, VA 22079
(703) 550-8100
www.shirleycontracting.com

Clark Concrete Contractors

7500 Old Georgetown Road
Bethesda, MD 20814
(301) 272-8100

Clark Foundations/Clark Civil

7500 Old Georgetown Road
Bethesda, MD 20814
(301) 272-8110

Clark Interiors

7500 Old Georgetown Road
Bethesda, MD 20814
(301) 272-8100

Edgemoor Infrastructure & Real Estate

7500 Old Georgetown Road
Bethesda, MD 20814
(301) 272-2910



WE'RE ON TWITTER!

For up-to-the-minute news and information on Clark's projects and people, follow us on Twitter: @ClarkBuilds

Superstructure is published quarterly by Clark Construction Group, LLC, one of the nation's largest providers of construction services.

For more information, contact:
Kimberly Wood or Eric Fulton in Corporate Communications. Email: kimberly.wood@clarkconstruction.com or eric.fulton@clarkconstruction.com.